

Fee schedule

Radiology fee

Pensioners are bulk billed.

Non-pensioners are charged as per the current rate and are entitled to a Medicare rebate.

The Radiology fee is payable on the day.

Speech Pathologist fee

The Speech Pathologist will notify you of the current fee when booking your appointment.

Speech Pathology services are non-rebateable outpatient services and do not qualify for a Medicare rebate.

Patients are responsible for claiming rebates directly from their private health insurer.

Epworth Rehabilitation

Excellence. Everywhere. Everyday.

Rehabilitation Services

Epworth Rehabilitation Richmond
89 Bridge Road
Richmond Vic 3121
Phone 03 9426 8726
Fax 03 9426 8734

Epworth Rehabilitation Camberwell
888 Toorak Road
Camberwell Vic 3124
Phone 03 9805 4125
Fax 03 9591 9249

Epworth Rehabilitation Brighton
85 Wilson Street
Brighton Vic 3186
Phone 03 9592 9144
Fax 03 9593 1276

Acute Services

Epworth Richmond
89 Bridge Road
Richmond Vic 3121
Phone 03 9426 8726
Fax 03 9426 8734

Epworth Freemasons
166 Clarendon Street
East Melbourne Vic 3002
Phone 0488 200 447

www.epworth.org.au

Revised August 2010

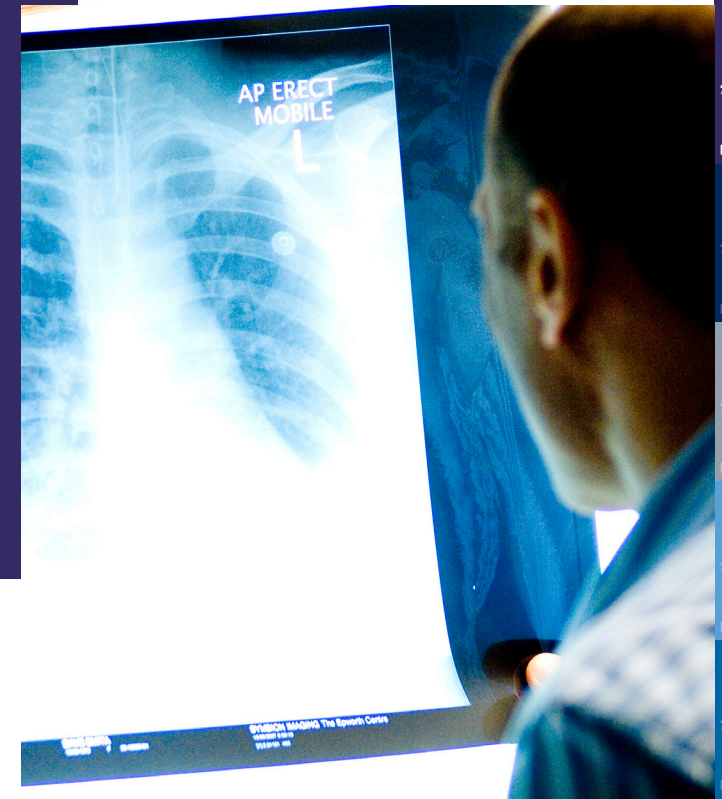
Epworth Rehabilitation

Excellence. Everywhere. Everyday.

Videofluoroscopy



Epworth
Rehabilitation



Epworth
Rehabilitation

This information is for people who are due to undergo or want to know more about the Videofluoroscopy procedure.

If you have difficulty reading or understanding this information, please ask your Speech Pathologist for assistance.

What is a Videofluoroscopy?

A Videofluoroscopy is a dynamic or moving x-ray of swallowing function from the mouth to the oesophagus.

It allows the examination of structures and muscle function in the mouth and the throat during swallowing.

A Videofluoroscopy provides information on swallowing function with a range of food and fluid types and can help identify treatment techniques that can improve safety and comfort when eating and drinking.

Who will be there?

The Videofluoroscopy will be performed by a Speech Pathologist and a Radiographer. A Radiologist can be consulted if required.

Preparation

There is no need for any preparation or fasting before a Videofluoroscopy.

How is it performed?

A Videofluoroscopy is not an invasive procedure.

You will sit on a chair with an x-ray machine on either side of you. You will be required to swallow small amounts of a few different consistencies of food and fluids.

The food or fluid will be mixed with barium, allowing it to be viewed under x-ray.

During the evaluation, you may be asked to change your posture or use specific swallowing techniques to determine if they will improve your swallowing function.

A videofluoroscopy will usually take between 15-30 minutes, however this can vary.

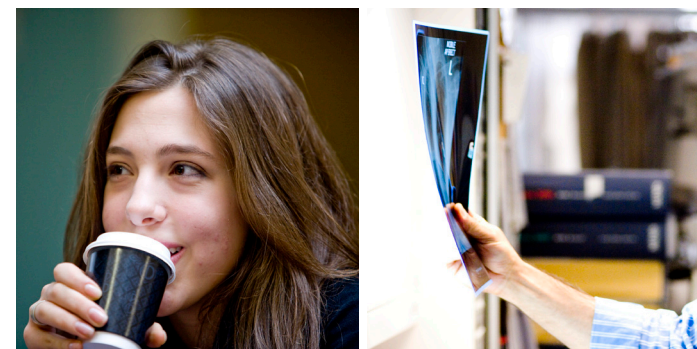
Results

Your Speech Pathologist will discuss the preliminary results with you immediately after the Videofluoroscopy.

Recommendations will subsequently be provided to maximise the safety of your swallowing, including specific food and fluid consistencies and strategies to use.

A full report will be sent to your referring Doctor.

A follow up appointment may be advised to discuss the findings and recommendations. You may also be referred to other therapists or specialists.



Making an appointment

Following referral from your doctor, please contact:

Speech Pathology Department
Epworth Rehabilitation Richmond
Phone 03 9426 8726

Location

Videofluoroscopies are performed at the Radiology department during business hours. The department is located on:

Level 2
Epworth Richmond
89 Bridge Road Richmond